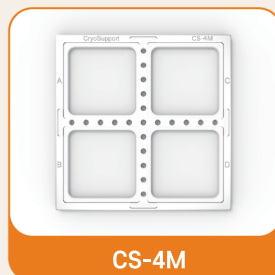
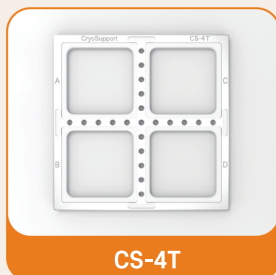


CryoSupport

One-Step Box for Connecting Cell Freezing and Cell Storing

Description



- Cryogenic Box for 2mL AT-Closed Vials (CS-25AT) or 2mL Cryotubes (CS-64CT)
- Optimized Design for Cold Air Circulation
- CRF (Controlled Rate Freezer) Available
- Increased the Stability of Stacking (Like Block, CS-25AT only)
- Available to Pre-Existing LN₂ Tank Rack
- External Dimensions
 - : 133mm (L) x 133mm (W) x 50mm (H) (CS-25AT)
 - 133mm (L) x 133mm (W) x 53.5mm (H) (CS-64CT)
- Tray for CryoSupport (Cell Box) (CS-4T for CS-25AT only or CS-4M for CS-25AT and CS-64CT)
- Optimized Design for Cold Air Circulation
- Easy to Put Out the Tray with Handle
- Increased the Stability by Putting the Box on the Groove of Tray
- External Dimensions
 - : 305mm (L) x 305mm (W) x 10mm (H) (CS-4T)
 - 305mm (L) x 305mm (W) x 8mm (H) (CS-4M)
- Floating Rack for AT-Closed Vials (2mL to 20mL)
- Optimized Design for Floating

Advantages



Shortened Working Time by 8min 45sec

No Need to Move Vials from CRF Racks to Cell Boxes
(Based on 500vials)



Prevention to Increase Vial Temperature

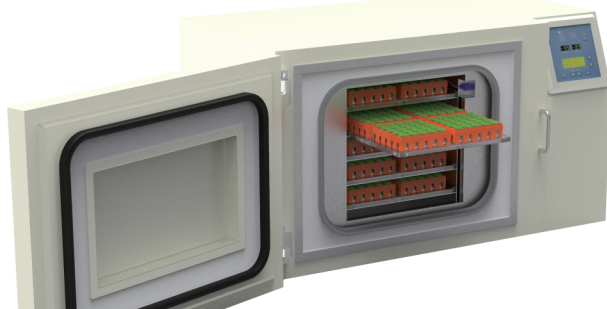
Increased the Temperature of Vials by about 72°C for 8min 45sec at Room Temperature
(Based on -76°C of Initial Temperature and 1mL of Solution)



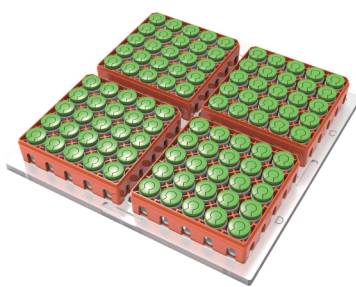
Increased the Stability of Stacking

Possible to Assemble Bottom of Cell Box Body and Top of Cell Box Lid

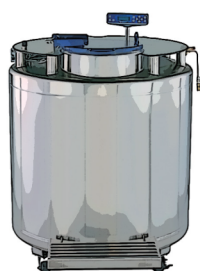
Work Flow



1. CRF Cycle Completion



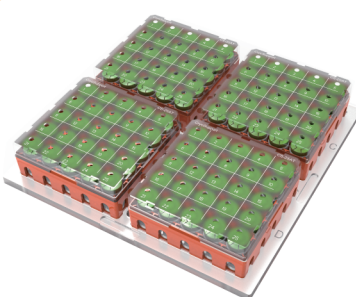
2. Put the Trays out from the CRF Chamber



5. Store in LN₂ Tank



4. Put the Cell Boxes into the LN₂ Tank Racks



3. Close the Cell Boxes with the Cell Box Caps

Ordering Information

Description	Cat. No.	Material	External Dimensions	Packaging Unit
CryoSupport (Cell Box)	CS-25AT	PC	133 x 133 x 50mm (L x W x H)	50ea in Box
CryoSupport (Cell Box for 2mL Cryotubes)	CS-64CT	PC	133 x 133 x 53.5mm (L x W x H)	50ea in Box
CryoSupport (Tray, CS-25AT only)	CS-4T	PC	305 x 305 x 10mm (L x W x H)	5ea in Pack
CryoSupport (Multi-Tray)	CS-4M	PC	305 x 305 x 8mm (L x W x H)	5ea in Pack
CryoSupport (Floating Rack)	CS-4FR	PP	78 x 78 x 65mm (L x W x H)	5ea in Pack

For CryoSupport enquiries and ordering, contact:

Kangstem Biotech Co., Ltd.

Web: <http://www.kangstem.com>

E-mail: info@kangstem.com